



FTMA Newsletter Summer 2021

In this edition:

[Word from Chair: Dan Howe](#)

[FTMA Conference - Note the Dates](#)

[FTMA Member Audits - we're back](#)

[MBIE Consultations](#)

Word from the Chair: Dan Howe



All too quickly it seems, we are drawing towards the close of another year. 2021 has been a roller coaster ride in a number of ways with a surging market and a strong performance by our sector, but also complicated by further COVID outbreaks and the extended lockdown in the Auckland region for those of us based there.

I don't need to tell any of you about the difficulties and complications of running our factories under these conditions and I take heart from the resilience and perseverance that FTMA members have shown throughout these episodes. I was particularly disappointed that we had to postpone our conference in September, but we are well set for May 17 – 19 next year at the same location so make sure that you note those dates in your calendars now.

Overall I am pleased with how FTMA has delivered for the members in 2021 with our executive sub-committee structure. There are some further details later in this edition but I will touch on a few of the highlights from this year.

Training: With our strong relationship with BCITO, we have continued to work through the National Advisory Group in a joint effort that has 251 people in frame and truss training as of November 2021. Considering that a number of people will have completed their training, or left for other reasons, it represents continued strong growth since the same period in 2020. We will continue to work closely with BCITO as they migrate to the new vocational training structure under Te Pūkenga.

Safety: We have received a very positive response to our SOP safety training video project. Unfortunately the extended Auckland lockdown meant the film crew has not been able to work a lot of that time so we are not as advanced as we hoped to be. Nonetheless the first example covering nail gun use will be released for FTMA members in February 2022. Following that there will be a series of similar videos covering common equipment used in frame and truss manufacture such as saws, presses and stackers. We also have interest in these videos from FTMA in Australia.

Sustainability: Regardless of whether we like it or not, there will be increasing demands from our customers and stakeholders to demonstrate that we operate our industry in a sustainable manner. That means making the best use of resources and inputs to provide fit for purpose products while ensuring safety for our people and minimising impact on our environment – and doing all of that while being economically competitive and profitable. As part of that effort, we have commissioned preparation of a FTMA Environmental Product Declaration (EPD) document. This will be a valuable resource for members to assure our customers and regulators that timber frames and trusses are the optimum sustainable solution for residential and other light construction. We will be in touch with members further early in the new year with further details.

Advocacy: A lot of regulatory change for the building and construction sector is being pushed through mainly by MBIE (Ministry of Business, Innovation & Employment). Using our improved network with other building industry organisations, I believe that we have been able to deliver certain outcomes with MBIE on behalf of our members that prevented additional compliance burdens and regulatory complexity being placed on our sector. More on that later in this edition.



In conclusion I wish you all a very Merry Christmas and happy New Year. I hope that you are able to take some time out to relax, rest and recharge after a particularly challenging year. It all starts again early next year and on behalf of the FTMA executive we look forward to working with you and delivering value in 2022.

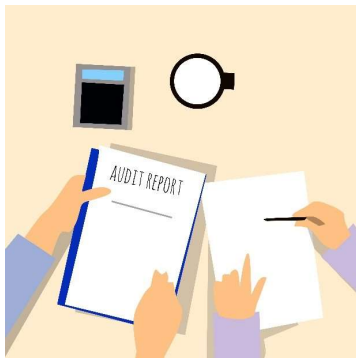
Dan Howe – Chairman
FTMA New Zealand

FTMA Conference - Note the Dates

We have been very pleased that our MC, presenters, sponsors, exhibitors and the venue have all re-committed for our postponed conference now on May 17 – 19, 2022. All we need now is to ensure that as many members as possible participate to make the event as successful as possible. So mark May 17 – 19, 2022 in your diaries or calendars now. We will be keeping to the same conference programme as far as possible with the technical workshop on Tuesday May 17 and the main conference on the 18th and 19th including the gala dinner event on the evening of the 18th.

 May 2022						
Monday	Tuesday	Wednesday	Thursday	Friday	Saturday	Sunday
						1
2	3	4	5	6	7	8
9	10	11	12		14	15
16	17 ✓	18 ✓	19 ✓	20	21	22
23	24	25	26	27	28	29

FTMA Member Audits – we're back



For the FTMA values and code of practice to be meaningful, we need to ensure that our members embody those same values and practices in their operations to a reasonable degree. In 2022 we will restart our FTMA member audits. The audit process will be quick, done at a time that suits the members and of no direct cost to the audited members. The FTMA Code of Practice document which can be found [here](#) forms the basis of the criteria for the audit. If you have any questions or concerns, please contact Member Services.

MBIE Consultations – Insulation performance and building component documentation

As we have reported previously, MBIE is introducing changes to the Building Code regarding insulation performance in new buildings and certification of off-site manufactured modular building components (among other changes). The FTMA executive committee has been corresponding and negotiating with MBIE on certain aspects of these changes as we saw a potential for them to act against the interests of our sector and increase costs without providing significant corresponding benefits to the end user market or other stakeholders. We are pleased to confirm that MBIE considered our concerns and these are reflected in the recent Building Code consultation outcomes as follows.

Energy efficiency and insulation performance for residential and small buildings: Changes to clause H1 of the Building Code are required to bring the energy and thermal efficiency of New Zealand homes up to a standard more aligned with current international levels. However part of the changes being proposed was adoption of 140 mm wide framing in order to accommodate greater thickness of insulation materials. FTMA and WPMA (Wood Processors & Manufacturers Association) advised MBIE that broad implementation of 140 mm wide framing would cause severe difficulties for the timber supply chain which is already under considerable pressure.

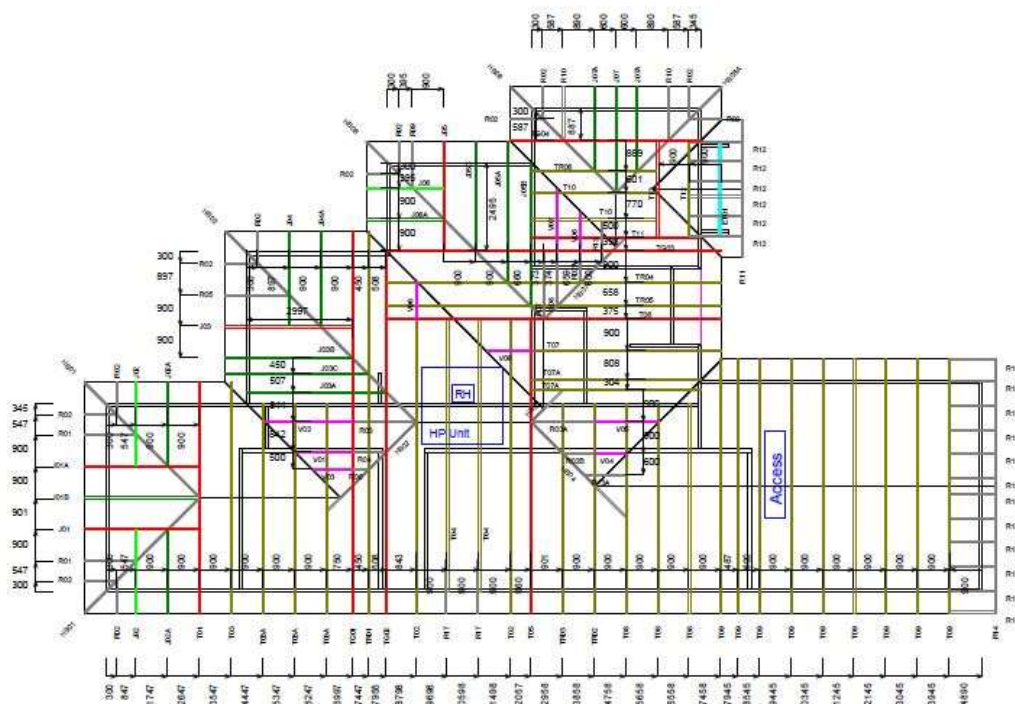
Consequently the new wall insulation requirements can still be achieved with standard 90 mm wide framing as noted in the consultation outcomes summary. This is an interim step and further changes in future are likely. However further changes that affect timber frame and truss manufacture will be worked through the NZS3604 review process which has a specific working group for thermal performance. Full details of the consultation outcome can be found [here](#).

TABLE 1.3: Increase in minimum R-values for residential and small buildings

Building element	Climate zone					
	1	2	3	4	5	6
Roof	R6.6↑					
Windows	R0.37↑		R0.46↑		R0.50↑	
Wall	R2.0↑			R2.0		
Slab-on-ground floors	R1.5↑			R1.5↑	R1.6↑	R1.7↑
Other floors	R2.5↑			R2.8↑	R3.0↑	

Extract from the insulation consultation outcome document showing new R values for difference building elements.

Building amendment bill – modular building components: As part of a wide ranging reform to improve the documentation and information quality of building materials, components and systems, FTMA became aware that MBIE was considering grouping frame and truss manufacture in with modular and off-site building component manufacture potentially with a significantly increased level of regulation and compliance complexity.



In a series of discussions with MBIE staff, we presented examples of documentation currently provided with frame and truss supply and argued that

the current system was fit for purpose and did not require significant change. Consequently MBIE acknowledged that the current documentation and process is satisfactory, and that frames and trusses being open structures should still be inspected on the building sites as part of normal code compliance certification. The full consultation outcome document can be found [here](#).

In working through these and other building code related matters this year we acknowledge the support and cooperation of related industry associations including the Wood Processors & Manufacturers Association. The Building Industry Federation, the Construction Industry Council and the Association of Wall & Ceiling Industries among others. We also acknowledge the staff of MBIE that we have interacted with who have been professional, attentive to our concerns and demonstrated willingness to avoid regulatory requirements that are unreasonable or impracticable for industry and the supply chains.

FTMA Executive

admin@ftma.co.nz | member.services@ftma.co.nz | www.ftma.co.nz



Copyright © 2021 Frame & Truss Manufacturers Association of New Zealand, All rights reserved.

You are receiving this email because you are a member of FTMA New Zealand.

Our mailing address is:

c/- Martelli McKegg
PO Box 5745, Victoria Street West
Auckland 1142

Want to change how you receive these emails?

You can [update your preferences](#) or [unsubscribe from this list](#)

This email was sent to <<Email Address>>

[why did I get this?](#) [unsubscribe from this list](#) [update subscription preferences](#)

Frame & Truss Manufacturers' Association · 1/26 Pleasant Road · Glen Eden · Auckland, 0602 · New Zealand

